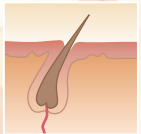
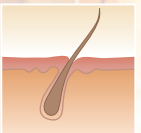




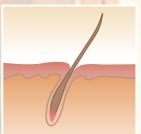
LightSheer™ Diode Laser –
 the world's most advanced treatment
 for effective removal of unwanted hair.
 Great news for men and women who
 want to get rid of excess hair.



Hair's active growth phase is called anagen. During anagen, the hair contains an abundance of melanin. Hairs in this phase are most affected by treatment.



Catagen is the regression phase when the lower part of the hair stops growing but is not shed, and the follicle is reabsorbed.



The resting phase is called telogen, during which the old hair falls in preparation for the development of new hair.



LIGHTSheer™

Permanent

Hair Reduction

for all Skin Types

Clinical photography courtesy of:

Dr. Nimish Patel, M.D. - *Ahmedabad, India*
 Valeria B. Campos, M.D., Christine C. Dierickx,
 M.D., R. Rox Anderson, M.D. - *Boston, MA*

Lumenis and its logo and LightSheer and its logo are trademarks of the Lumenis Group of Companies.
 Copyright © 2003, the Lumenis Group of Companies.
 All rights reserved.
 PBP000220

laserhairremoval

There is a **better solution** for removing unwanted hair



You may be surprised to learn that virtually your entire body is covered with hair. Because most of this hair is fine and pale, it usually isn't visible to the naked eye.

But, when darker, coarser hair appears in places which may make you uncomfortable – like on the face, neck, abdomen, breasts, legs or underarms in women or on the shoulders, chest and back in men, it may be time to consider hair removal with the LightSheer diode laser.

Understanding **hair removal**



In the past, the usual remedies for unwanted hair included plucking, shaving, waxing or chemical depilatories. Some are painful, some are messy and all are only temporary.

For long-term hair removal, electrolysis is popular and effective, but it is a time-consuming procedure, which can be painful and is useful only in removing hair in small areas.

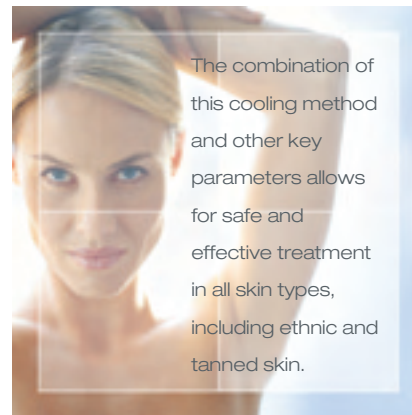
During electrolysis, an electric current passes through a needle to destroy each individual hair root. It typically takes months and numerous regular visits to clear even small areas, like the upper lip.

Laser hair removal is a more effective solution. The LightSheer diode laser is a state-of-the-art system specially designed to remove unwanted hair faster, with less discomfort and more reliably than other methods.

About LightSheer **laser** treatment



A laser produces a beam of highly concentrated light. The light emitted by the LightSheer diode laser is well absorbed by the pigment located in hair follicles. During the procedure, the laser pulses for a fraction of a second, long enough to heat up the hair and significantly impede the follicle's ability to re-grow. This process also treats numerous hair follicles simultaneously. Therefore, LightSheer is appropriate for treating even the largest areas of the body both quickly and effectively.



An important part of the procedure is the cooling of the skin. A special contact-cooling handpiece allows your physician to treat even the most sensitive skin. It protects and cools the upper layer of the skin before, during and after each laser pulse while directing the laser energy to the hair root.

What can **you** expect?



The length of a laser treatment may last anywhere from a few minutes to an hour or more, depending on the size of the area being treated. It is important to know that the hairs in an active growth phase (referred to as anagen) are most affected by the laser. As all hairs are not in this phase at the same time, more than one treatment will be necessary to achieve the best result.

The laser treatment itself may cause some discomfort. Most patients tolerate the procedure well, but because some areas of the body are more sensitive than others, topical anesthesia can be an option.

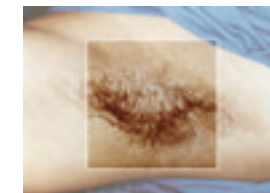
The appearance of the treated area immediately following treatment will vary from patient to patient depending on the extent of the procedure and skin type. Side effects, if any, are minor. They may include redness and swelling around the hair follicle, which are, in fact, desired clinical results and indicate that the follicle has responded to the treatment. Most people return to normal activity right away. We will be happy to tell you more about your treatment, possible side effects and what results you can expect during your consultation.



Before



46 months post treatment



Before



4 months post treatment